

## A HUTCHINSON POWERED HOPPER PRODUCT



### ADDITIONAL BENEFITS

- HOPPER SECTIONS AVAILABLE IN 5' LENGTHS, USE UP TO 3 SECTIONS PER SIDE
- 20", 30" AND 5' TRUNK EXTENSIONS ARE AVAILABLE
- ADJUSTABLE FILLER PANELS TO ALLOW FOR VARIABILITY IN CONCRETE FORMING
- SOLID DRIVE-OVER PANELS EASILY REMOVE FOR ACCESS



HUTCHINSON/MAYRATH  
A DIVISION OF GLOBAL INDUSTRIES, INC.  
P.O. BOX 629 CLAY CENTER, KS 67432  
PH. (785) 632-2161 FAX (785) 632-5964

[WWW.HUTCHINSON-MAYRATH.COM](http://WWW.HUTCHINSON-MAYRATH.COM)



[WWW.FACEBOOK.COM/HUTCHINSONMAYRATH](http://WWW.FACEBOOK.COM/HUTCHINSONMAYRATH)



# HUTCHINSON

## DUAL HOPPER CHAIN CONVEYOR

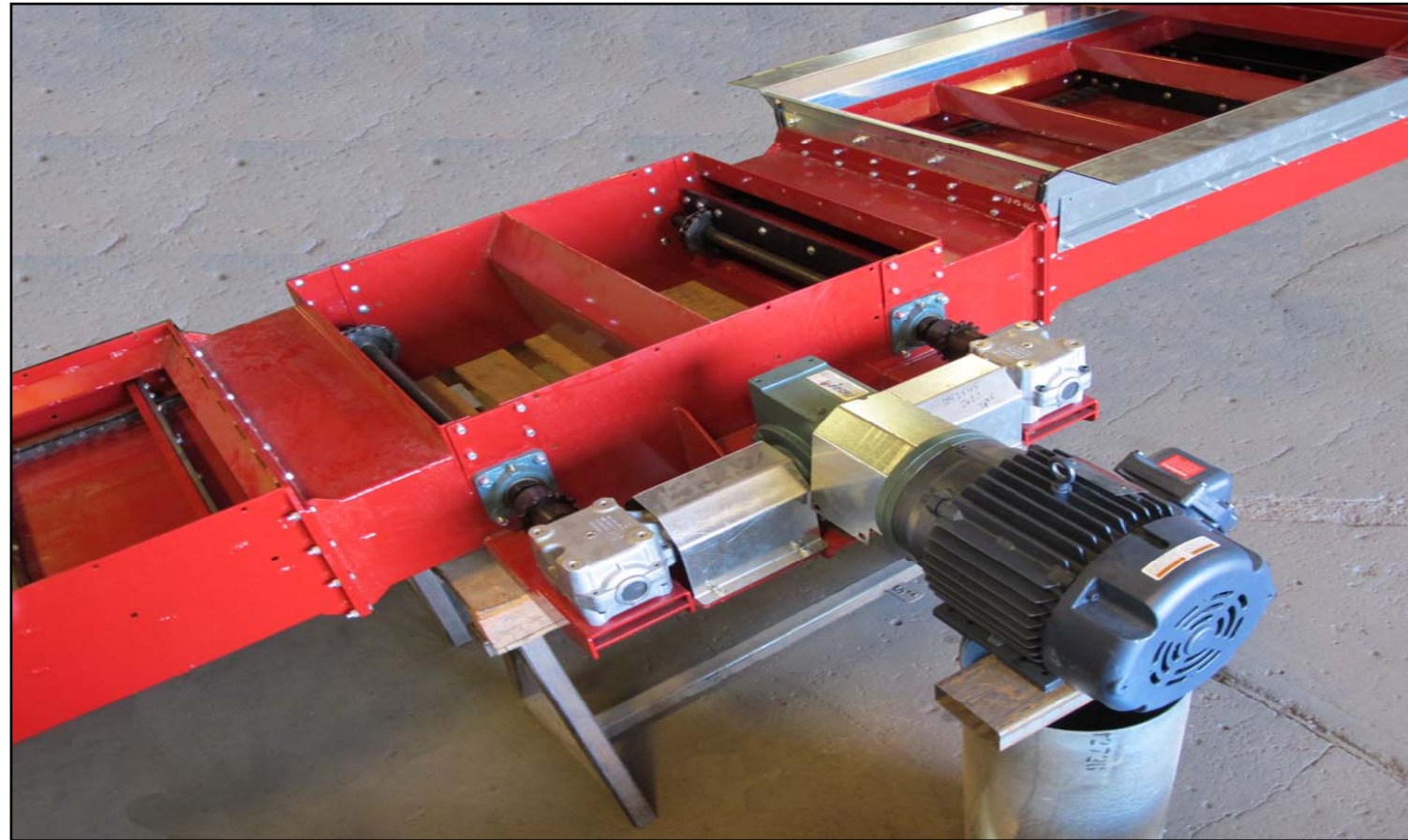


### THE ALL NEW DUAL HOPPER CHAIN CONVEYOR

- IMPRESSIVE 10,000 BPH CAPACITY
- UNLOAD BOTH TRAILER HOPPERS AT THE SAME TIME
- MATCHES THE CAPACITY OF 12" DOUBLE RUN GRAIN PUMP, LOW PROFILE CHAIN CONVEYOR AND MASTER MOVER CHAIN CONVEYOR.

*COMPLIMENTED BY COMPARISON*

## DUAL HOPPER CHAIN CONVEYOR



### DIRECT DRIVE

- ELIMINATES BELTS TO PREVENT SLIPPING, ADJUSTMENT, AND BREAKING
- USES 15:1 MAIN GEARBOX CONNECTED TO A 1:1 RIGHT ANGLE GEARBOXES TO DRIVE TWO SEPARATE CONVEYORS
- RECOMMEND USING A VARIABLE FREQUENCY DRIVE CONTROLLER TO ADJUST SPEED AND FLOW

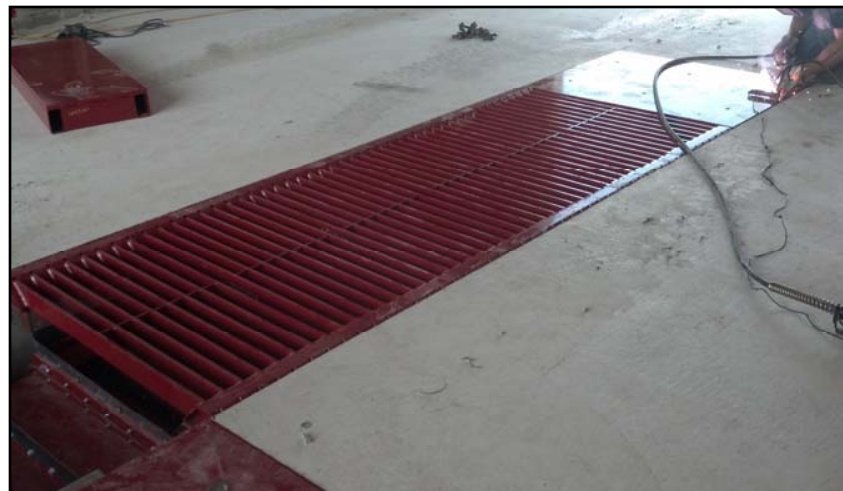
### HEAVY DUTY

#### CONSTRUCTION

- 7 GA. LASER CUT SHEET STEEL
- 3/8" LASER CUT FLANGE CONNECTIONS

#### GRATES

- 44" WIDTH OPENING
- DRIVE-OVER GRATING MEETS OSHA STANDARDS 1910.272



### TRENCH INSTALLATION

- ADJUSTABLE CONVEYOR SUPPORTS
- APPROXIMATE 42" DEPTH BETWEEN THE DUAL HOPPER CHAIN CONVEYOR AND LOW PROFILE CONVEYOR
- CONTACT FACTORY FOR CONCRETE DIMENSIONS AND TAKE AWAY CONVEYOR OPTIONS
- DUAL HOPPER CHAIN CONVEYOR CAN BE PLACED UNDERNEATH SCALES



### SPRING TAKE-UPS

- LESS MAINTENANCE
- CONSTANT CHAIN TENSION
- EXTENDED CHAIN LIFE
- REMOVAL OF TAIL SHAFTS